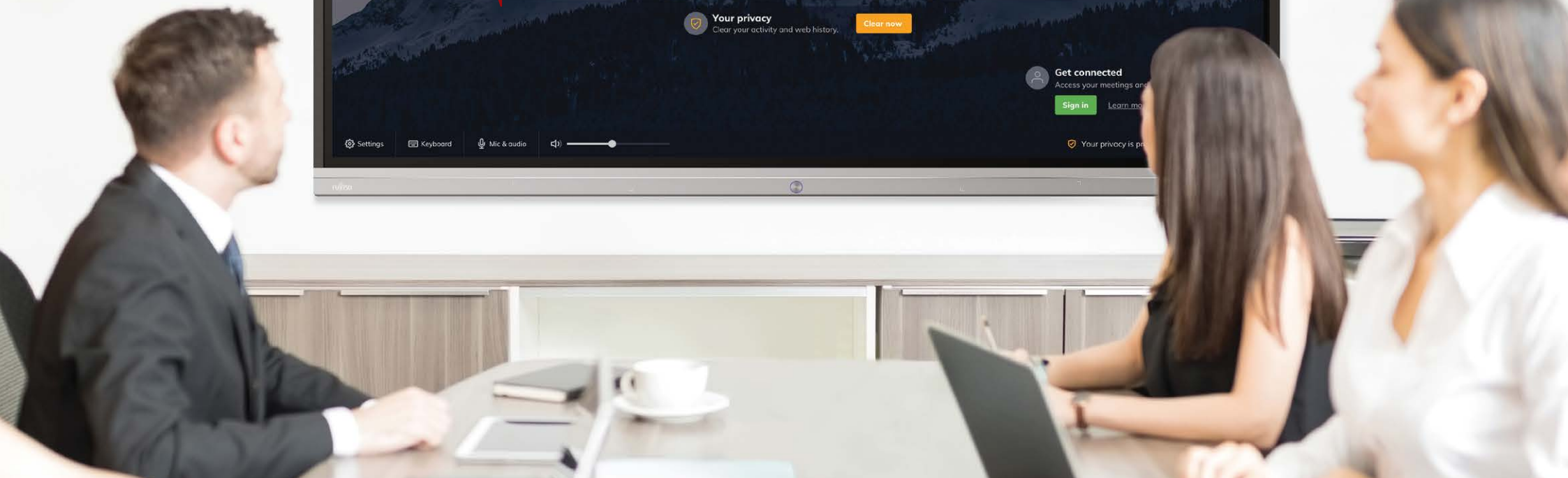


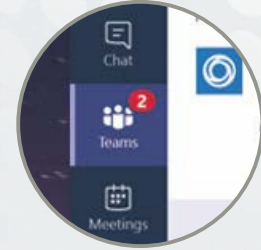
# Key Driver for Digital Transformation

Collaboration Solution

FUJITSU

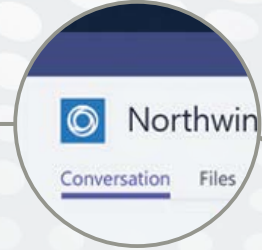


# Transform Your Digital Workplace with Collaborative Solution



## Interactive Experience

Supports up to 20-point touch and pen-on-paper writing experience, enabling team members to annotate or draw on the screen with their fingers or pen styluses simultaneously.



## Spectacular 4K Display

With Direct-Lit LED (DLED) display technology and true 4K Ultra High Definition (UHD) screen resolution, users will enjoy the finest details, stunning image clarity, and the ultimate in visual experience.



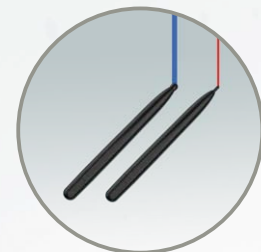
## Friendly Design

Menu including Home, Back, Shortcuts, Settings and Volume options is always visible and located on both sides of the screen, underscoring its convenience.



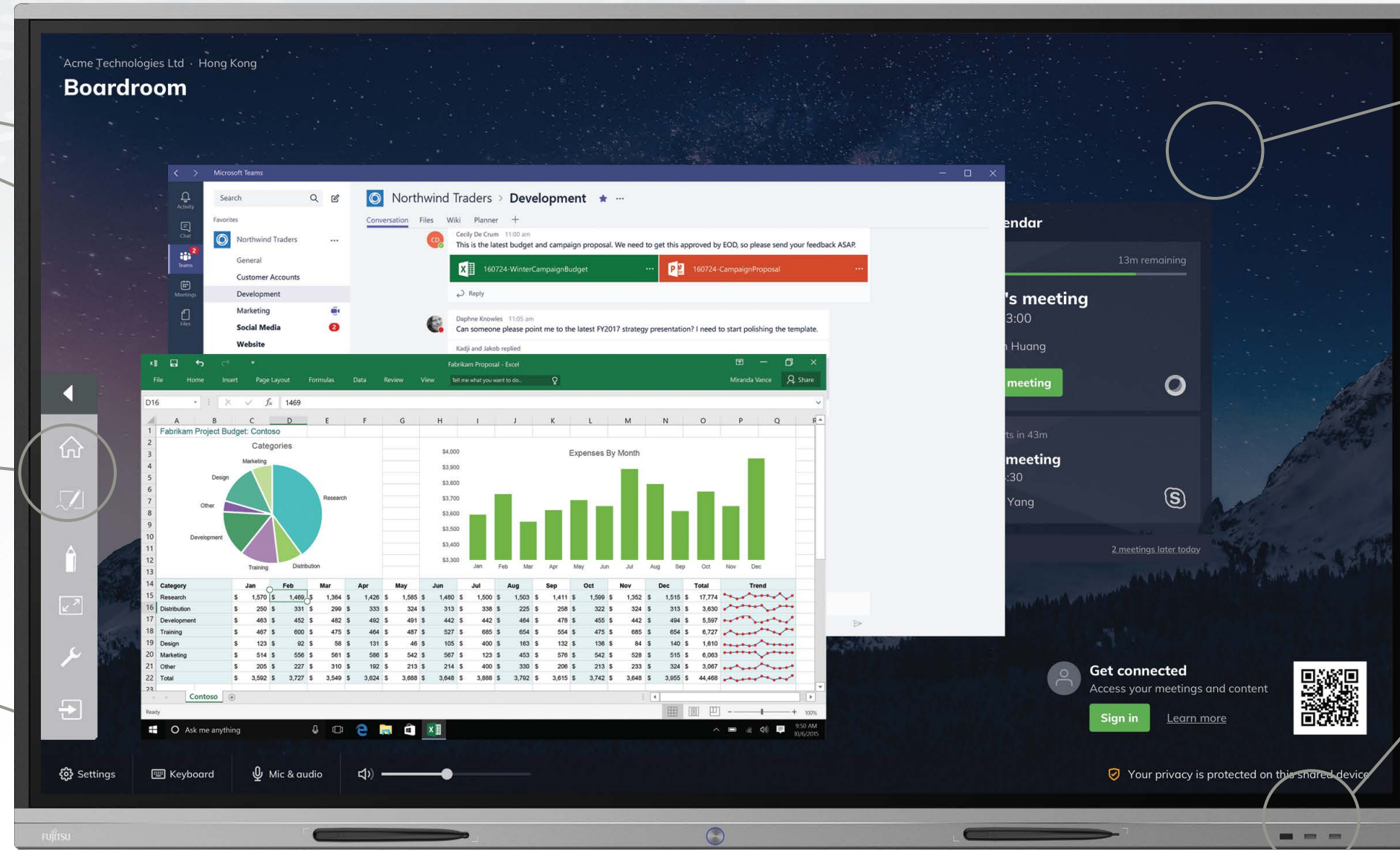
## Stay Organized

Magnetic penholder conveniently located at the front allows team members to stay focused on what is important.



## Pen Technology

Pen tip size is automatically detected for different colours and thickness, making team collaboration effortless.



## Anti-Glare Tempered Glass

The display panel is surfaced with a 4mm tempered glass for usage safety and anti-glare surface effectively improve text and reduce reflections avoiding eyestrain.



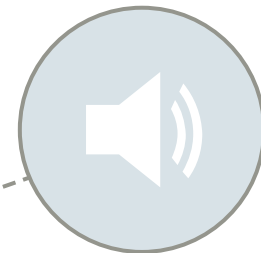
## Excellent Connectivity

Offering multiple ports, including 3 HDMI (2.0), 6 USB Ports, WiFi, Gigabit Ethernet, Audio and HDMI Out for screen extension. IO ports are easily accessible, but hidden away to avoid visual distractions.



## Quick USB Access

USB ports are located at the front for instant access to external storage and devices.

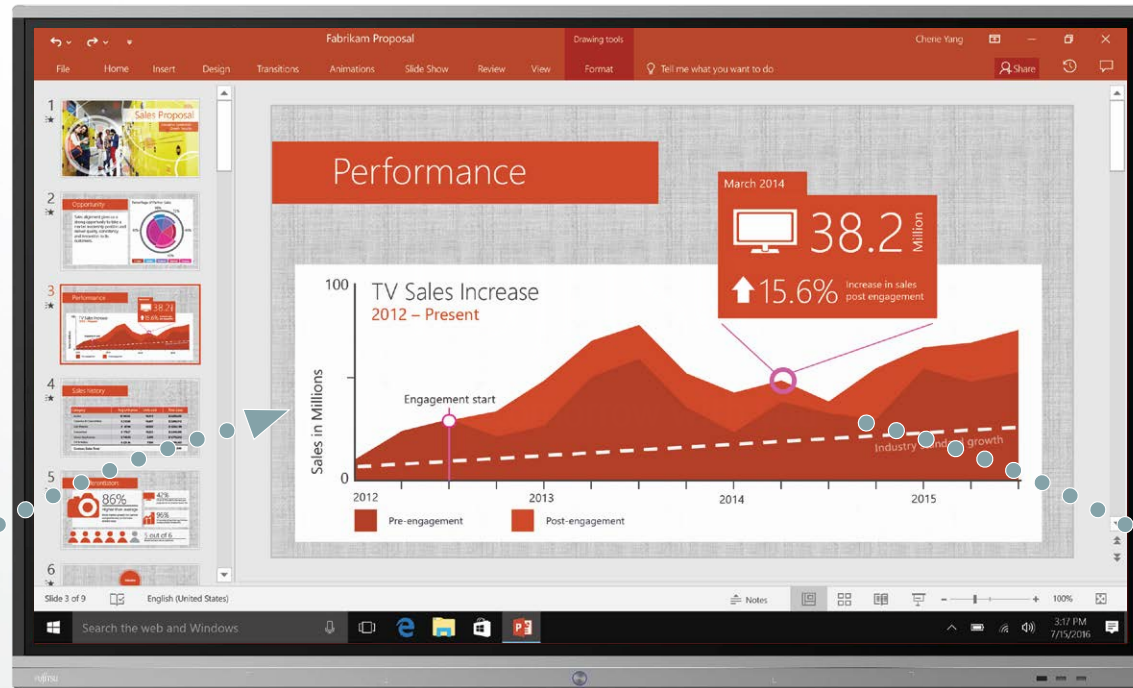


## Built-in Audio

Featuring two built-in front 12W speakers, making for a simpler and clutter-free cable setup.



# Unlock Your Potential with Digitalization



## Multi-Display Synchronization

Multiple displays can be synchronized, allowing team members to collaborate anywhere in the same room or even in a different room via the network.



## Real-Time Annotation

Team members can improve collaboration by writing and highlighting anywhere on videos, images, documents and contents displayed.



## One-to-Many Screen Sharing

No limits to presenting at a town hall. Every audience member will be able to see the display in real time on their own devices.



## Simple and Smart Wireless Presentation

Project your content wirelessly from any device to your meeting room display. Collaborate in real time with touchback, without moving back and forth during the presentation.

Fujitsu Interactive Panel	Basic Series (IW551/ IW651/ IW751/ IW861)	Professional Series (IW552/ IW652/ IW752/ IW862)
<b>Picture Performance</b>		
Panel and Backlit	LED, DLED Backlight	IPS, DLED Backlight
Screen Surface Treatment	AG tempered glass 4mm Mohs level 7	AG tempered glass 4mm Mohs level 7
Viewing Angle (h/v) - Typical	178°	178°
Colour Performance	1.07 Billion Colours	1.07 Billion Colours
<b>Size and Resolution</b>		
Aspect Ratio	16:9	16:9
Resolution (Native)	3840(H) x 2160(V)	3840(H) x 2160(V)
Refreshing Frequency	60Hz	60Hz
<b>Connectivity</b>		
VGA/D-SUB IN	1 x D-SUB	1 x D-SUB
HDMI	1 x HDMI OUT, 3 x HDMI IN (HDMI2.0)	1 x HDMI OUT, 3 x HDMI IN (HDMI2.0)
DisplayPort	1 x DP 1.2	-
USB	6 x USB (included Touch USB x2)	3 x USB 2.0 (including 2 USB ports in front) / 3 x USB 3.0
Audio In	1 x 3.5 mm stereo phone jack	1 x 3.5 mm stereo phone jack
Audio Output	1 x Audio out	1 x Audio out
RS232 Control	1 x RS232	1 x RS232
Built-in Speaker	Yes, 2 x 15 W	Yes, 2 x 12 W
LAN	1 x LAN	1 x Gigabit LAN
<b>Touch System</b>		
Technology	Infrared	Infrared
Touch Point	20 points touch	20 points touch
Touch Tool	Finger, Finger cover by glove, Opaque objects	Finger, Finger cover by glove, Opaque objects
Accuracy	±1mm (over 90% Area)	±1.5mm(over 90% Area)
Communication Mode	Full-speed USB (plug and play)	Full-speed USB (plug and play)
<b>Power Consumption (Typical)</b>		
Soft Switch Off	≤0.5W	≤0.5W
<b>Warranty</b>		
Standard Warranty	3 years (depending on country)	3 years (depending on country)

## Options & Accessories



**Dual Band Wi-Fi Module**  
Part Number: HLMWB0001A-01



**Wall Mount**  
Included



**Mobile Trolley**  
Part Number: HLTWB0001A-01



**Slim Mobile Trolley**  
Part Number: HLTWB0002A-01

# Experience Better Meetings with Fujitsu Collaboration Launcher **Plus**

Launcher's smart room calendar picks up your video calls and meetings, so all you need to do is tap a button to start or join your calls. Launcher integrates with MS exchange and supports Zoom, Teams, Skype for Business, GoToMeetings, Google Meet, Lifesize and WebEx.

## Essentials

- 1 Fujitsu Interactive Panel Professional Series**  
Delivers unparalleled visual performance and promotes collaboration.
- 2 Fujitsu ESPRIMO G558 Collaboration Launcher Plus**  
With Microsoft® Windows® 10 and DisplayNote Launcher, get one-touch access to your apps, video calls and calendars.
- 3 Logitech Meetup or equivalent**  
Conduct an all-in-one conference using an ultra-wide lens and an echo-cancellation microphone.



# Other Key Features

## Your meetings, on any screen

Launcher presence detection technology transforms workspaces. Using the Launcher app for iOS and Android, gives users access to their personal video calls and content on any screen cutting down the need to sign in and out of meeting room screens.



## Everyone can present, no matter what network they are on

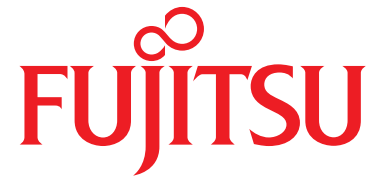
With one click, you are wirelessly presenting. It works with all modern laptops, tablets, phones and support for your browser. It works securely with any network configuration, including corporate Wi-Fi, guest Wi-Fi, mobile data, a hotspot or any combination.

## Share your content with an audience of any size

You can send what is on your display to other devices in real-time. Simply walk up to the display, start the broadcast and your audience can follow along. Works on any browser, no applications installation.



Compatible with:     iOS 



## Contact Us

### HONG KONG

Fujitsu Business Technologies Asia Pacific Ltd.  
Tel: (852) 3910-8228  
Email: [fpca.hksales@hk.fujitsu.com](mailto:fpca.hksales@hk.fujitsu.com)  
[hk.fujitsu.com/pc](http://hk.fujitsu.com/pc)

### MALAYSIA

Fujitsu (Malaysia) Sdn. Bhd  
Tel: (60) 3-8230-4188  
Email: [askfujitsu.my@fujitsu.com](mailto:askfujitsu.my@fujitsu.com)  
[my.fujitsu.com/pc](http://my.fujitsu.com/pc)

### SINGAPORE

Fujitsu Asia Pte Ltd.  
Tel: (60) 3-7801-0505  
Email: [eid\\_helpdesk@my.fujitsu.com](mailto:eid_helpdesk@my.fujitsu.com)  
[sg.fujitsu.com/pc](http://sg.fujitsu.com/pc)

### TAIWAN

Fujitsu Taiwan Ltd.  
Tel: (886) 2-2311-2255  
Email: [FTL.lifebook@fujitsu.com](mailto:FTL.lifebook@fujitsu.com)  
[tw.fujitsu.com/pc](http://tw.fujitsu.com/pc)

### CHINA

Fujitsu (China) Holdings Co., Ltd-PC China Division  
Tel: 86 (21) 58871000-8721  
Email: [fpcacn.support@cn.fujitsu.com](mailto:fpcacn.support@cn.fujitsu.com)  
[cn.fujitsu.com/pc](http://cn.fujitsu.com/pc)

### THAILAND

Fujitsu (Thailand) Co., Ltd.  
Tel: (66) 0-2302-1500  
Email: [info@th.fujitsu.com](mailto:info@th.fujitsu.com)  
[th.fujitsu.com/pc](http://th.fujitsu.com/pc)

### INDONESIA

PT Fujitsu Indonesia  
Tel: (62) 21-570-9330  
Email: [marketing@id.fujitsu.com](mailto:marketing@id.fujitsu.com)  
[id.fujitsu.com/pc](http://id.fujitsu.com/pc)

### VIETNAM

Fujitsu Vietnam Limited  
Tel: (84-24) 2220-3113  
Email: [sales-vn@fujitsu.com](mailto:sales-vn@fujitsu.com)  
[vn.fujitsu.com/pc](http://vn.fujitsu.com/pc)

### PHILIPPINES

Fujitsu Philippines, Inc.  
Tel: (63) 2-841-8488  
Email: [info@ph.fujitsu.com](mailto:info@ph.fujitsu.com)  
[ph.fujitsu.com/pc](http://ph.fujitsu.com/pc)

© Copyright 2020 Fujitsu Business Technologies Asia Pacific Ltd.

Fujitsu, the Fujitsu logo and Fujitsu brand names are trademarks or registered trademarks of Fujitsu Limited in Japan and other countries. Other company, product and service names may be trademarks or registered trademarks of their respective owners, the use of which by third parties for their own purposes may infringe the rights of such owners. Technical data are subject to modification and delivery subject to availability. Any liability that the data and illustrations are complete, actual or correct is excluded. Designations may be trademarks and/or copyrights of the respective manufacturer, the use of which by third parties for their own purposes may infringe the rights of such owner. All rights reserved. (Feb 2020)